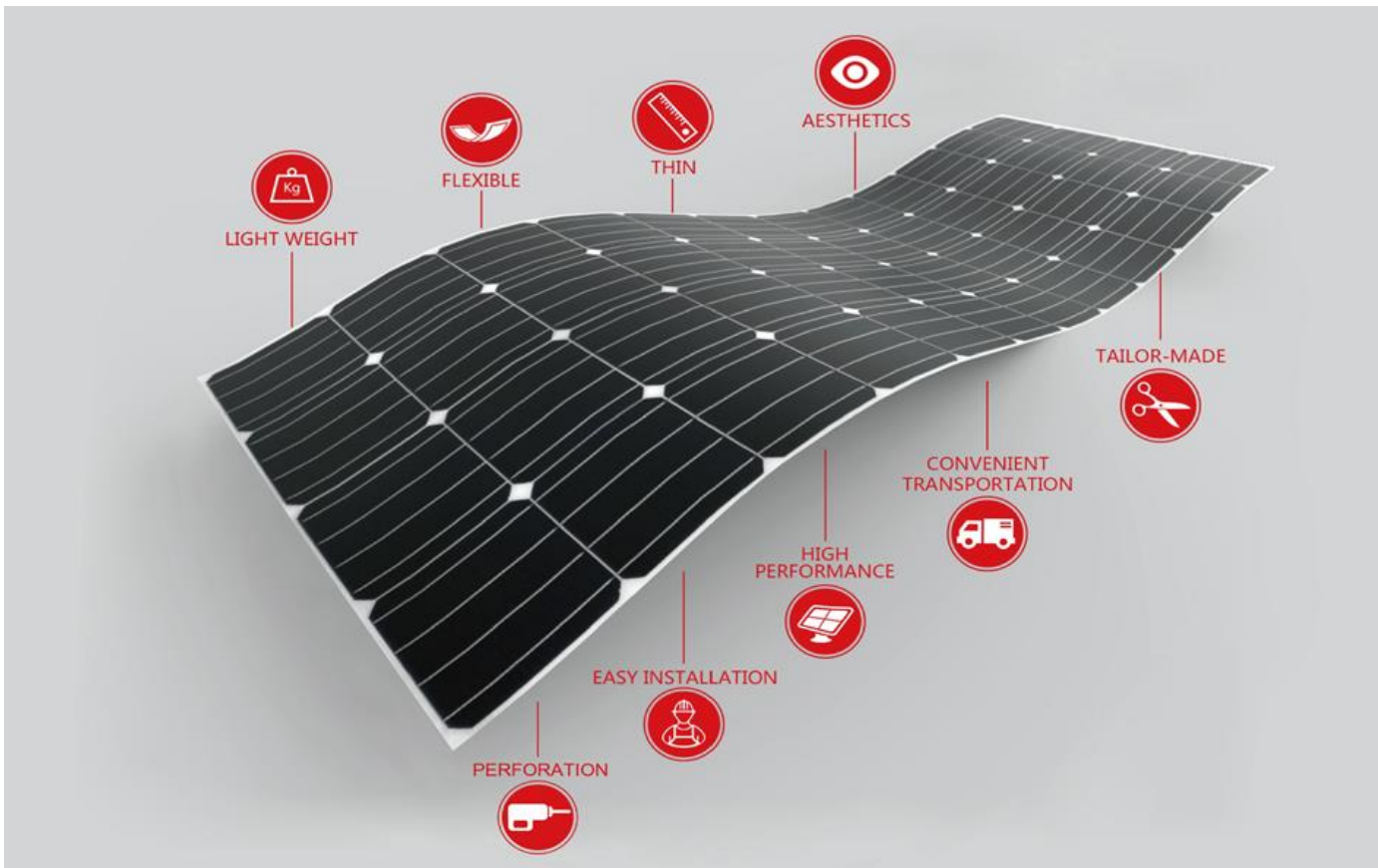


SunMan Plakpanelen 360 WP

prijs per Wp €. 0,83 excl. BTW



Electrical Characteristics

STC	SMF360M-6X12UW	SMF355M-6X12UW
Maximum Power (P_{max})	360	355
Maximum Power Voltage (V_{mp})	39.8	39.5
Maximum Power Current (I_{mp})	9.05	8.99
Open-circuit Voltage (V_{oc})	48.3	48.1
Short-circuit Current (I_{sc})	9.57	9.51
Module Efficiency (%)	18.4	18.1
Operating Temperature (°C)	-40 °C to 85 °C	
Maximum System Voltage	1000 V DC (IEC)	
Maximum Series Fuse Rating	20 A	
Application Class	Class A	
Power Tolerance	0/+5 W	

STC: Irradiance 1000W/m², Cell temperature 25°C, AM=1.5.
Tolerances of P_{max} , V_{oc} and I_{sc} are within ± 5%

NMOT	SMF360M-6X12UW	SMF355M-6X12UW
Maximum Power (P_{max})	270	266
Maximum Power Voltage (V_{mp})	36.6	36.4
Maximum Power Current (I_{mp})	7.38	7.31
Open-circuit Voltage (V_{oc})	44.9	44.7
Short-circuit Current (I_{sc})	7.83	7.76

NMOT: Irradiance 800W/m², Ambient temperature 20°C, AM=1.5, Wind speed 1 m/s.



Schillingstraat 13-15
2988 CT Ridderkerk
085-10 53 535